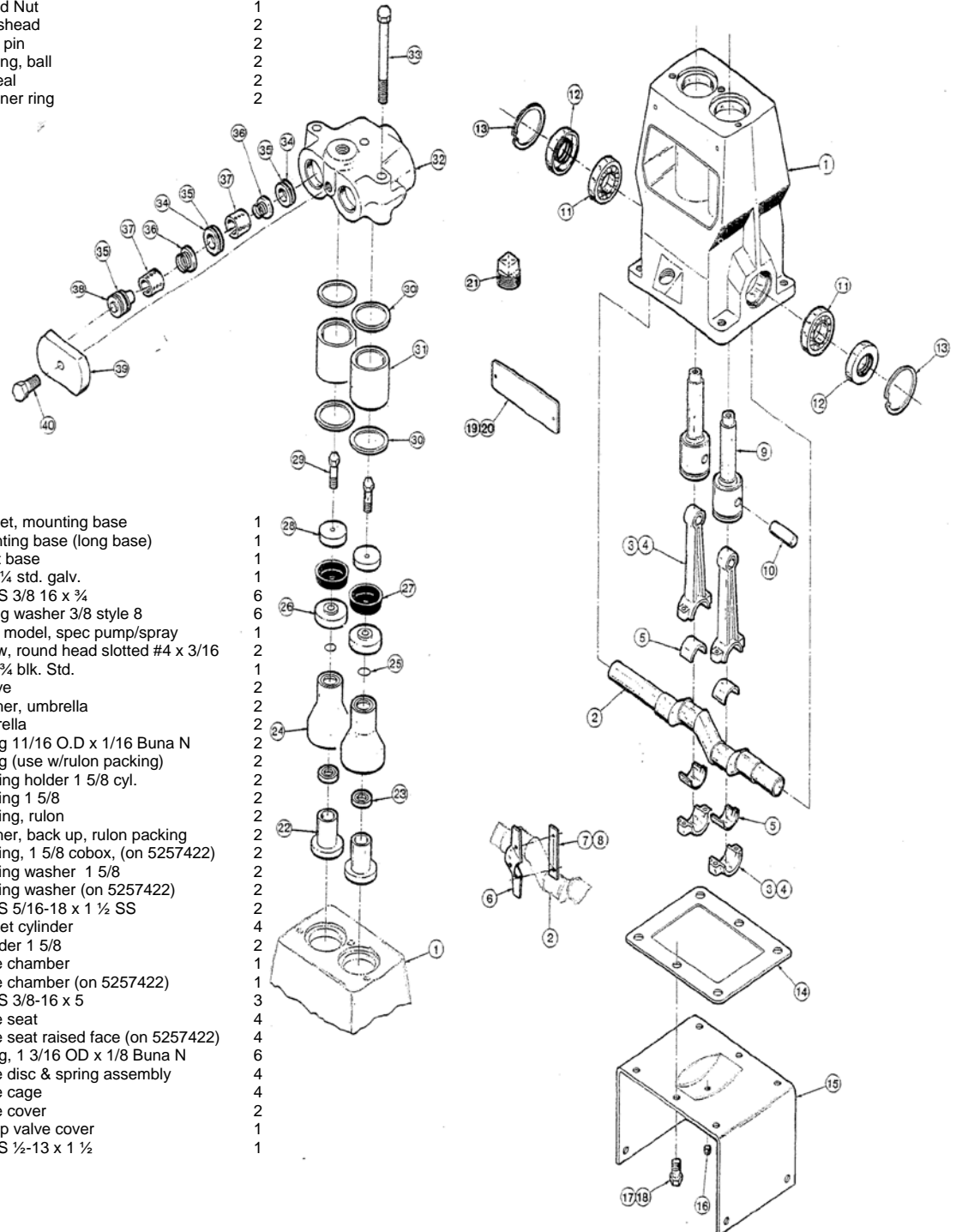


MODEL R-10 PUMP
Parts Breakdown

Item No.	Part No.	Description	Qty.
1	1267611	Pump case	1
2	1244980	Crankshaft (long base pumps)	1
	1275026	Crankshaft (short base)	1
3	1263906	Connecting rod	2
4	1278439	HHCS ¼ - 20 x 1 lock	4
5	1280908	Bearing insert, pair	2
6	1280807	Oil slinger RH	1
7	1272419	Includes: Speed Nut	1
9	1216823	Crosshead	2
10	1219650	Wrist pin	2
11	1177804	Bearing, ball	2
12	1219669	Oil seal	2
13	1113528	Retainer ring	2



14	1219606	Gasket, mounting base	1
15	1255297	Mounting base (long base)	1
	1270922	Short base	1
16	1-1465	Plug ¼ std. galv.	1
17	0-0286	HHCS 3/8 16 x ¾	6
18	1177455	Spring washer 3/8 style 8	6
19	5262738	Plate model, spec pump/spray	1
20	1187413	Screw, round head slotted #4 x 3/16	2
21	1-1471	Plug ¾ blk. Std.	1
22	1218743	Sleeve	2
23	1269388	Washer, umbrella	2
24	1279148	Umbrella	2
25	1101339	O-ring 11/16 O.D x 1/16 Buna N	2
	320040	O-ring (use w/rulon packing)	2
26	1282557	Packing holder 1 5/8 cyl.	2
27	1251925	Packing 1 5/8	2
	1255223	Packing, rulon	2
	1255224	Washer, back up, rulon packing	2
	5257807	Packing, 1 5/8 cobox, (on 5257422)	2
28	5257218	Packing washer 1 5/8	2
	5257986	Packing washer (on 5257422)	2
29	1284516	HHCS 5/16-18 x 1 ½ SS	2
30	A91684	Gasket cylinder	4
31	1241364	Cylinder 1 5/8	2
32	1241397	Valve chamber	1
	5257095	Valve chamber (on 5257422)	1
33	0-0224	HHCS 3/8-16 x 5	3
34	1219615	Valve seat	4
	5260142	Valve seat raised face (on 5257422)	4
35	1177394	O-ring, 1 3/16 OD x 1/8 Buna N	6
36	5253499	Valve disc & spring assembly	4
37	1219610	Valve cage	4
38	1219614	Valve cover	2
39	1255887	Clamp valve cover	1
40	0-0513	HHCS ½-13 x 1 ½	1

N/A