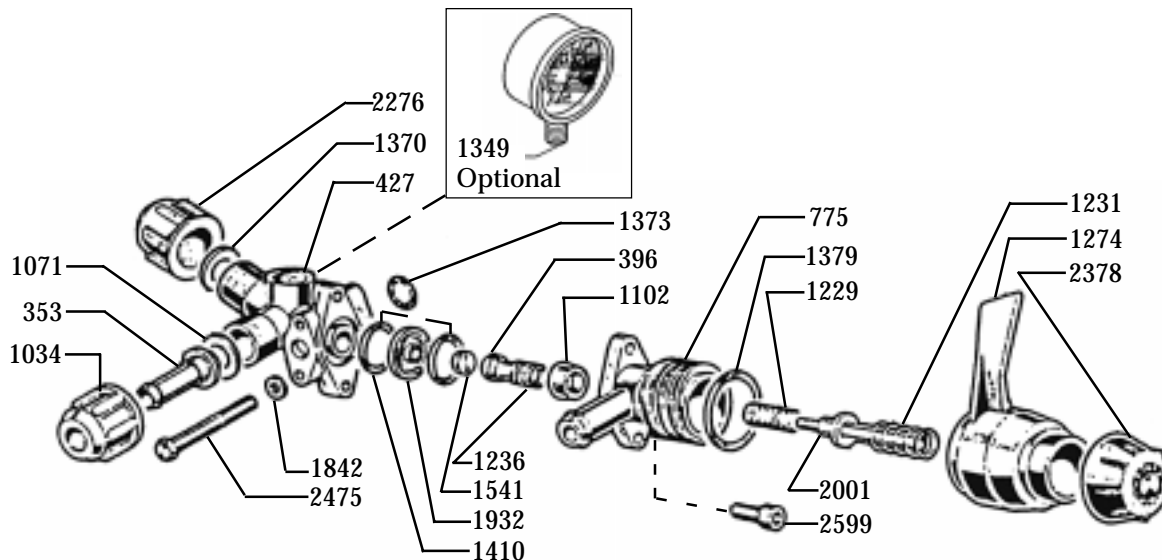


# 6010.23 CONTROL UNIT

## Operating Instructions / Parts List



REF#	PART#	DESCRIPTION	QTY	REF#	PART#	DESCRIPTION	QTY
353	0202.09	3/8" Hose Barb	1	*1370	1101.06	O-Ring	1
*396	0203.08	Valve Collar	1	*1373	1101.11	O-Ring	1
427	0204.41	Valve Body	1	*1379	1101.23	O-Ring	1
775	0252.01	By-pass Body	1	*1410	1101.69	O-Ring	2
1034	0604.09	Discharge Barb Nut	1	*1541	1204.15	Poppet	1
1039	0604.14	Cap	1	1842	1403.04	Washer	2
1071	0605.05	Gasket	1	*1932	1501.20	Seat	1
1102	0606.01	Seal	1	*2001	1503.12	Stem	1
1229	0901.31	Spring	1	2276	1603.42	Cap	2
1231	0901.06	Spring	1	2378	1801.13	Adjustment Knob	1
1236	0901.37	Spring	1	2475	1804.61	Bolt	2
1274	0902.12	Regulator Handle	1	2599	1805.37	bolt	2
1349	GG-0350	Gauge (Optional)	1				

\*Parts included in Repair Kit #8701.01

1. Before operating or re-operating the pump, push the manual dump valve lever (Ref. #1274) counter-clockwise to the dump position. **FAILURE TO DO SO WILL VOID PUMP WARRANTY.**
2. Turn the red pressure adjustment knob (Ref. #2378) counter-clockwise to relieve spring tension. NOTE: Step 2 applies only to initial start-up, and is not necessary in daily operation of pump.
3. Start unit and let run until air is evacuated from system, when only liquid is expelled from the bypass line
4. Turn dump valve lever clockwise to OFF position. Open spray gun or spray boom and turn the red pressure adjustment knob clockwise until desired operating pressure is achieved.

### PROTECT PUMP FROM FREEZING

If freezing conditions exist, flush pump with a 50/50 mixture of antifreeze and water

### UDOR U.S.A., INC.

500 Apollo Drive  
Lino Lakes, MN 55014  
TEL. (651) 785-0666  
FAX. (800) 732-2670  
www.udorusa.com